



## ITIH4 (80k, Cleaved-Arg689) rabbit pAb

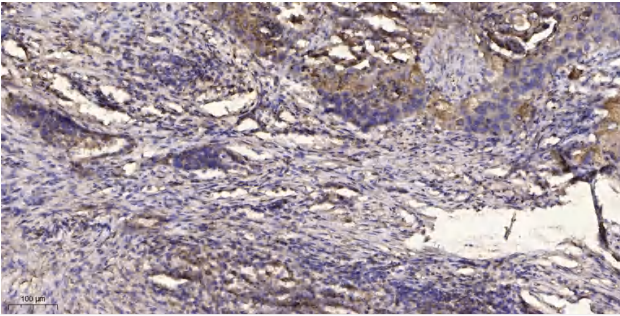
<b>Catalog No</b>	YP-Ab-15818
<b>Isotype</b>	IgG
<b>Reactivity</b>	Human;Rat;Mouse;
<b>Applications</b>	WB;IHC
<b>Gene Name</b>	ITIH4 IHRP ITIHL1 PK120 PRO1851
<b>Protein Name</b>	ITIH4 (80k, Cleaved-Arg689)
<b>Immunogen</b>	Synthesized peptide derived from human ITIH4 (80k, Cleaved-Arg689)
<b>Specificity</b>	This antibody detects endogenous levels of Human ITIH4 (80k, Cleaved-Arg689)
<b>Formulation</b>	Liquid in PBS containing 50% glycerol, 0.5% BSA and 0.02% sodium azide.
<b>Source</b>	Polyclonal, Rabbit,IgG
<b>Purification</b>	The antibody was affinity-purified from rabbit serum by affinity-chromatography using specific immunogen.
<b>Dilution</b>	WB 1:500-2000;IHC-p 1:50-300
<b>Concentration</b>	1 mg/ml
<b>Purity</b>	≥90%
<b>Storage Stability</b>	-20°C/1 year
<b>Synonyms</b>	Inter-alpha-trypsin inhibitor heavy chain H4 (ITI heavy chain H4;ITI-HC4;Inter-alpha-inhibitor heavy chain 4;Inter-alpha-trypsin inhibitor family heavy chain-related protein;IHRP;Plasma kallikrein sensitive glycoprotein 120;Gp120;PK-120) [Cleaved into: 70 kDa inter-alpha-trypsin inhibitor heavy chain H4; 35 kDa inter-alpha-trypsin inhibitor heavy chain H4]
<b>Observed Band</b>	80 100kD
<b>Cell Pathway</b>	Secreted.
<b>Tissue Specificity</b>	Liver specific.
<b>Function</b>	ERROR 23
<b>Background</b>	ERROR 23
<b>matters needing attention</b>	Avoid repeated freezing and thawing!



### Usage suggestions

This product can be used in immunological reaction related experiments. For more information, please consult technical personnel.

## Products Images



Immunohistochemical analysis of paraffin-embedded human Squamous cell carcinoma of lung. 1, Antibody was diluted at 1:200(4° overnight). 2, Tris-EDTA,pH9.0 was used for antigen retrieval. 3,Secondary antibody was diluted at 1:200(room temperature, 45min).